

PHILADELPHIA PRESBYTERIAN CHURCH

351 Morrow Road, Forest Park, GA 30297 - PO Box 871028, Morrow, GA 30287

THE CROSSROADS

We are entering the hot days of summer, and our 10-ton A/C unit that cools the entire upper floor of the fellowship hall and attached rooms is out. We have no choice but to replace it. In addition, the flooring in the Sunday School room that was just painted must be replaced, and other flooring in the upstairs Sunday School rooms and hallway needs to be replaced at the same time. We actually have part of the upper hall carpet taped down to keep folks from tripping on it. This involves over \$25,000 in operating expenses that must be spent. Our Sunday offerings are barely covering our expenses, and at times, we're a little under the budget. Like everything else, our expenses have gone up, especially utilities and insurance.

We don't do stewardship campaigns normally at Philadelphia. We don't ask for tithing cards or written promises of giving amounts. We count on faith and your response to our needs. But now we need you to help us cover our bills, as you can. If you can give a little more – 10% or even \$10, it will help us keep our finances in the black. As we prepare for Homecoming, we are trying to make the church as inviting and fresh as we can. Thank you in advance for helping us out so we can be proud of our building and grounds that have served us for almost 200 years.

Yours in Christ,

Jeanne

PASTOR:

Rev. Jeanne Simpson

PHONE:

404-366-1851

PASTOR E-MAIL:

revjeannesimpson@gmail.com

SECRETARY E-MAIL:

secycppc@bellsouth.net

WEBSITE:

ppc-usa.org

**A light in the community
that brings all people to
God through Christ
centered worship and
ministry and nurtures their
faith in order to
extend His kingdom.**

Inside this issue:

| | |
|------------------------------|---|
| Prayer List / Thank You | 2 |
| Birthdays & Anniversaries | 2 |
| KINSHIP CARE school supplies | 5 |
| Craft Group & Workdays | 3 |
| PW Corner | 3 |
| Man of the Year | 3 |
| Clerk's Report | 3 |

THIS MONTH'S BIRTHDAYS

06/ Rachel Rohrbach
08/ Joan Murphy
12/ Cathy Morris
12/ Thomas Thigpen
12/ Fred Rohrbach
13/ Wallace Dunn
19/ Ed Murphy
26/ Beverly Johnson
27/ David Hatch
31/ Rick Pierce

THIS MONTH'S ANNIVERSARIES

12/ Betty & Henry Brock
15/ Joyce & Tom Smith
16/ Kathy & Rick Pierce
21/ Pat & John Randolph

THIS MONTH'S USHERS

Jim Phillips
Tom Murphy
Cathy Morris

TO BE REMEMBERED IN PRAYER AND WITH CARDS (new info in bold)

Please notify us concerning new info and updates. Inquiring minds – and prayerful hearts – want to know!

06/15 Tony Bray (Debbie's brother) – home recovering from blood clot in lung, getting better

05/20 Helen Carter (John & Pat's daughter) –testing/determine lasting brain damage from accident

06/12 Rose Enow – Safety on trip to Cameroon

05/20 Jeff Foster (Debbie & Dinah's brother) –started chemo on June 30

05/20 Nancy Fuentes (Salvatore's mom) – in rehab for leg surgery

06/23 Pam Langley—in ICU at Piedmont Henry—some bleeding on her brain, mobility issues, etc.

05/25 Luis Mendez (Senda de Salvacion pastor) – no weight on broken leg and ankle for 6-8 months

06/01 Katrina Parks (mother of visitor) –recovering slowly from hospital stay and multiple health issues

06/20 John Randolph – metastatic bladder cancer

06/15 Jason Rutherford (Debbie Bray's nephew) – paralyzed arm due to a bad fall

06/15 Jim Simpson— back at Sunrise Senior Living awaiting surgery

Please pray for the AA Participants meeting at our church

OUR HOMEBOUND: *Please refer to the Church Directory for contact information*

Nell Cates Patty Boone Becky Huie Ann NeSmith

Prayer Request: Call 404-366-1851, Email secyppc@bellsouth.net or call a Session member or Shepherd.

Thank You!

Dear PPC friends,
Thank you for the prayers as I continue to battle bladder cancer. I also want to thank you for the cards, emails, and calls that I received as I celebrated #90. Having friends like you is a true blessing.

John Randolph

Thank you for your generous donations to **Securus House** during May and June, of towels and wash cloths. We were also able to furnish them with other much needed items. Our gifts valued at \$872.94.

Connie McWilliams, Community Missions

HOMEcoming 2025

Please remember to visit the PPC website and register for lunch on October 12. We need a count for everyone, as well as your purchase of meal ticks, since we are using a caterer.

The PPC web page **also has the information to make a purchase** of several items.

- COMMERATIVE PPC BRICKS to be purchased for a walkway with a name printed on the brick in honor or memory of someone.
- CHRISTMAS ORNAMENTS with the church's likeness in the design
- COLLECTABLE PPC PLATES
- HOMEcoming 2025 shirts

To see everything offered, go to our website at www.ppc-usa.org and click on [More Info and Register here].



Tuesday, July 1, 9:30am
@ Egg's Up, Morrow.
See you there!

PW MESSAGE CORNER:

Please note: There will be no PWCT meeting in July. Our next meeting will be Sunday, August 3, immediately after worship to discuss our 2026 budget

JUN 12—10:30am—Circle One



PW Man of the Year – 2025 – Hal Banke

On Father's Day, our Presbyterian Women honored our 7th annual Man of the Year, a man who has shown dedication to God by service to our Church and community over his lifetime.

Hal Banke, this year's Man of the Year is a husband, father, and grandfather. He was born into our Church and has been an integral part of the Church all his life.

For over 20 years he served as Sunday School Superintendent, with duties every Sunday, plus High School Graduation Recognition programs, and presentations of Bibles for rising 3rd grade elementary children. He was key in organizing our Vacation Bible Schools and music programs for the children. He participated in PLOT activities, including providing meals for the Youth.

He has been part of the choir all his adult life - he has been singing in the choir since he was 17. He has provided special music with singing solos, duets, and small group specials. He has also filled in as Choir director on Sundays as needed. He has participated in Advent wreath lighting services many Christmas seasons.

He participates in the Shepherding program -- delivering meals, making hospital and in-home visits with his wife, Kathy. He has been a willing transportation assistant for the Craft Group, enjoying the reward of a special meal! Most recently, he and Kathy have been providing food for the Babb project on a weekly basis.

These are the ways Hal lives his life dedicated to God, our Church and community, and his family. The Man of the Year honor comes with a certificate and a \$75 restaurant gift card.

Hal, Thank You for ALL You Do for Our Church!!! We All Really Appreciate You!!!

Craft Group

July 08—11:30am @ LaParrella Mexican Restaurant, 1820 Jonesboro Rd., McDonough

July 23—11:30am—@ Barnstormers Restaurant, Williamson, then to Peach Orchard PLEASE NOTE: THIS IS A WEDNESDAY



WORKDAY— 9:00AM

SAT, July 12 & 19

Please know that help is needed to get things ready for Homecoming. We hope you can come and help.

PPC Clerk's Corner

Greetings from the Clerk of Session,

We are officially in the summer season and boy does it feel like it!!! Summer in Georgia can be a bit much but it's also a good time to just relax and enjoy the fun that comes with summer – swimming, cookouts, vacation, etc. I hope you are enjoying your summer so far.

The Session held its monthly meeting on Tuesday, June 17, 2025. We are still meeting via Zoom. For the month of May, our financial information was as follows:

Total Assets - \$112,192.75

Monthly Identified Offerings – \$12,564.08

YTD Identified Offerings – \$69,378.48

Monthly Total Expenses – \$13,792.15

YTD Expenses – \$60,977.93

Monthly Surplus/Deficit – (\$1,228.07) – deficit

YTD Surplus/Deficit – \$8,400.55 - surplus

As you can our expenses in May were more than our Identified Offerings. We greatly appreciate your financial support, and we are always looking for ways to trim our expenses.

We are now 4 months away from Homecoming!!! Can you believe it? The Homecoming Committee is busy, but your help is needed as well. We are working on several property projects so if you are able to come and help on the scheduled workday please do so. All help is greatly appreciated. We have sent out Save the Date cards and will soon send out the invitations so that members and guests can RSVP for Homecoming. If you have not done so already, please go to the church website and RSVP for Homecoming. Rick Pierce has done an excellent job of setting up the registration information on the church webpage. It's very easy to sign up and you can also look at the items we have for sale for Homecoming including commemorative bricks. We are currently having to handle 2 major projects – 1) replacing an AC unit and 2) new flooring. The AC unit was replaced at the end of June, and it was not a cheap fix. The flooring must be done before Homecoming. Any additional offerings you can put towards either of these projects would be greatly appreciated. **Please consider making an additional donation towards these projects.**

I hope you enjoy your summer! Have fun and eat some ice cream!!!

Much love,

Jennifer

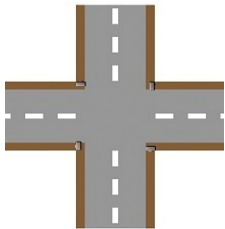
July is the month we collect School Supplies for Kinship Care. Se our complete list of needs on the back of the calendar. Thanks

OUR MISSION: is to offer spiritual peace in a chaotic world through the stability of traditional Christ-centered teaching, worship and prayer.

OUR CORE VALUES:

- Radical Hospitality** (Romans 12:9-21)
- Passionate Worship** (John 4:21-24)
- Intentional Faith Development** (I Corinthians 9:19-24)
- Risk-Taking Mission and Service** (Matthew 25:14-30)
- Extravagant Generosity** (II Corinthians 9:6-15)

Find us on the web
ppc-usa.org



*THE CROSSROADS
PHILADELPHIA PRESBYTERIAN CHURCH
P.O. Box 871028
Morrow GA 30287*



KINSHIP CARE RESOURCE CENTER

Kinship Care Resource Center is a local organization that supports grandparents raising grandchildren and great-grandchildren. In July each year, we collect school supplies for the children returning to school. A list of the types of supplies they need is below.. Anytime you may find any of these items on sale and discounted, you may bring them in. The collection bin is in the Narthex. Please bring in by July 27.

Suggested school supplies are:

| | |
|--|---|
| large book bags | wet ones wipes |
| clear book bags | wooden pencils, erasers, & sharpeners |
| 3-ring binders (1-inch to 3-inch) | rulers, compasses and protractors |
| 5-tab divider sets | spiral notebooks (1-subject , 3- and 5- also) |
| pens (blue, black and red) | notebook paper (wide & college rule) |
| highlighters | index cards (3x5; ruled; white and colored) |
| mechanical pencils and refill pencil lead | colored pencils |
| colored folders (with and without prongs) | staplers and staples |
| calculators (<u>Scientific</u> for high school) | markers (10-pack) |
| hand sanitizer | copy paper |
| tissues (small packets) | tri-folder notebook with 3 sides |
| crayons (24-count only) | Trapper Keepers |
| white out | tape, glue sticks. Scissors |
| composition books | |
| dry erase markers | |

